

Vertical Cable Management

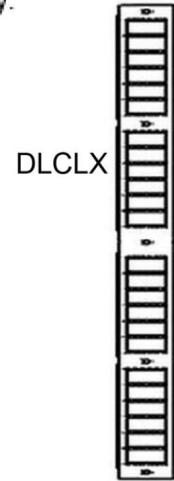
Vertical Cable Boxes provide a fluent transition of cables throughout the cabinet. These units feature cable entry from the rear and from both sides and come in 4", 6" and 8" depths. Add the number representing the depth to the end of the part number. Ex: DPXVM-614.

VERTICAL CABLE SYSTEM
PART No.
DPXVM-52x
DPXVM-61x
DPXVM-70x
DPXVM-77x
DPXVM-84x



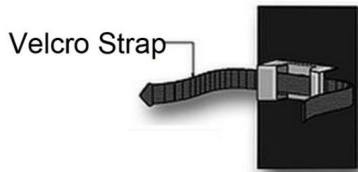
Cable Ladders are 6" wide and are used to tie wrap or Velcro strap cables so that they are neat and orderly.

CABLE LADDER PART No.
DLCLX-52
DLCLX-61
DLCLX-70
DLCLX-77
DLCLX-84



Velcro tie wraps are supplied in 8" and 12" lengths. The tie wraps can be used inside the cable guide or on the outside rear of the cable guide.

VELCRO TIE PART No.
DLVE-8
DLVE-12



The Tie Bar is 3" wide and is used to layer fiber cable in a vertical cabinet

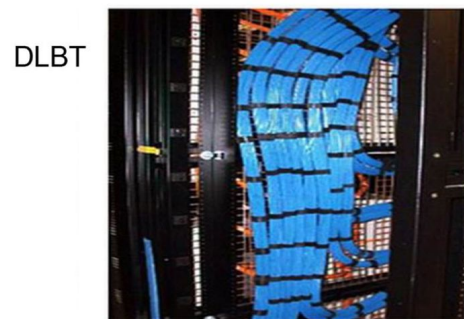
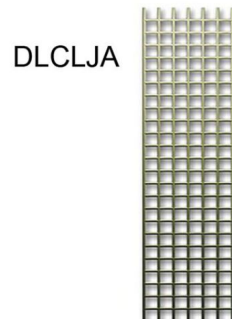
TIE BAR PART #
DLTB-52-3
DLTB-61-3
DLTB-70-3
DLTB-77-3
DLTB-84-3



Wire Mesh mounts at any point on the horizontal members in the cabinet. This allows you to run cables or fibers in any and all directions within the cabinet. This unique feature ensures that all your cabling is mounted without interfering with the movement of the mounting rails.

Each wire mesh unit is 6" wide and is sold in sets of 3.

WIRE MESH PART #
DLCLJA-52
DLCLJA-61
DLCLJA-70
DLCLJA-77
DLCLJA-84



All frames are supplied with two pairs of numbered universal mounting rails, levelers, a bag of 40 M6 clip nuts with screws and casters to make moving the frame easy. Two other standard widths are 24" and 26". The 24" is a straight 19" rack mount server cabinet. The 26" version can be used for 23" and or 19" rack mount. Universal rails can be provided that are reversible and have a 19" rack mount one side and a 23" rack mount.

CABINET 24" WIDE	DEPTH "A"	OVERALL HEIGHT "B"	# OF RACK UNITS "C"
DPX325224-19	30"	58 ¾"	30
DPX326124-19	30"	67 ½"	35
DPX327024-19	30"	76 ¼"	40
DPX327724-19	30"	83 ¼"	44
DPX328424-19	30"	90 ¼"	48
DPX365224-19	34"	58 ¾"	30
DPX366124-19	34"	67 ½"	35
DPX367024-19	34"	76 ¼"	40
DPX367724-19	34"	83 ¼"	44
DPX368424-19	34"	90 ¼"	48
DPX425224-19	40"	58 ¾"	30
DPX426124-19	40"	67 ½"	35
DPX427024-19	40"	76 ¼"	40
DPX427724-19	40"	83 ¼"	44
DPX428424-19	40"	90 ¼"	48

Universal 19" And 23" Rackmount

CABINET 26" WIDE	DEPTH "A'	OVERALL HEIGHT "B'	# OF RACK UNITS "C'
DPX325226-19	30"	58 ¾"	30
DPX326126-19	30"	67 ½"	35
DPX327026-19	30"	76 ¼"	40
DPX327726-19	30"	83 ¼"	44
DPX328426-19	30"	90 ¼"	48
DPX365226-19	30"	58 ¾"	30
DPX366126-19	30"	67 ½"	35
DPX367026-19	30"	76 ¼"	40
DPX367726-19	30"	83 ¼"	44
DPX368426-19	30"	90 ¼"	48
DPX425226-19	40"	58 ¾"	30
DPX426126-19	40"	67 ½"	35
DPX427026-19	40"	76 ¼"	40
DPX427726-19	40"	83 ¼"	44
DPX428426-19	40"	90 ¼"	48

